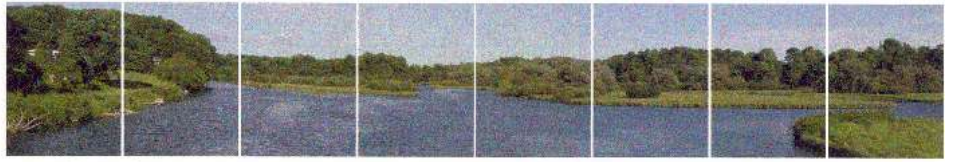




Autumn Leaves – 14 parts – approximately 8" x 9 feet 4 inches



Barn on the Hill – 3 parts – approx. 8' x 32"



Bay – 8 parts – approx. 11' x 64"



Boreas Pass – 2 parts – approx. 8" x 22"



Boulder Mountain – 10 parts – approx. 22" x 40"



Cityscape – 3 parts – approx. 8" x 32"



Canal – 3 parts – approx. 8" x 32"



Dam – 3 parts - approx. 8" x 32"



Cliff – 8 parts – approx. 11" x 64"



Genesee Brewery – 2 parts – approx 8" x 22"



Delaware Water Gap – 22 parts – approx. 22" x 8 feet



Glacier Rock – 3 parts – approx. 11" x 24"



Fall Farmland – 9 parts – approx 8" x 8 feet



Falls – 9 parts – approx. 11" x 6 feet



Golden Mountain – 4 parts – approx. 11" x 32"



Grand Floridian – 8 parts – approx. 11" x 64"



Halloween Hill – 4 parts – approx 8" x 44"



Grandeur – 8 parts – approx. 11" x 64"



Locust Point – 4 parts – approx 11" x 32"





Gravel Hillside – 10 part – approx. 11" x 6 feet 8 inches



Moon over the Mountain – 4 parts – approx 11" x 32"



Hazy Hillside – 8 parts – approx. 11" x 64"



Northwest Wonder – 4 parts – approx. 11" x 32"



McKeesport – 13 parts – approx 11" x 8 feet 8 inches



Misty Valley – 7 parts – approx. 11" x 56"



Outcropping – 4 parts – approx 11" x 32"



Montreal Skyline – 7 parts – approx. 11" x 56"



Philly View – 2 parts – approx 8" x 21"



Saranae – 4 parts – approx, 8" x 42"



Scranton – 7 parts – approx. 11" x 56"



September Mountainscape – 17 parts – approx 11 inches x 11 feet



Shadow Hills – 7 parts – approx. 11" x 56"



Snow Ridge – 7 parts – approx. 11" x 56"



Susquehanna Crossing – 4 Parts – approx. 11" x 32"



Trestle – 4 parts – approx. 8" x 42"



Swamp Close View – 8 parts – approx. 8" x 7 feet





October Haze – 7 parts – approx 11" x 56"



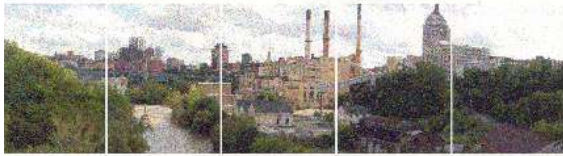
Shadow Hills Small – 3 parts – approx. 8" x 32"



Rochester Falls – 9 parts – approx. 11" x 6 feet



Rochester Small – 3 parts – 8" x 28"



Rochester Skyline – 5 parts – approx. 11" x 38"



Ray Mountains – 5 parts – approx. 8" x 53"



Rolling Cornfields – 7 parts – approx. 8" x 6 feet



Steven Mountain – 3 parts – approx. 8" x 32"



Salt City – 8 parts – approx. 11" x 64"



Snowy Peaks – 2 parts – approx. 8" x 22"

Swamp Far View – 7 parts – approx 11" x 56"



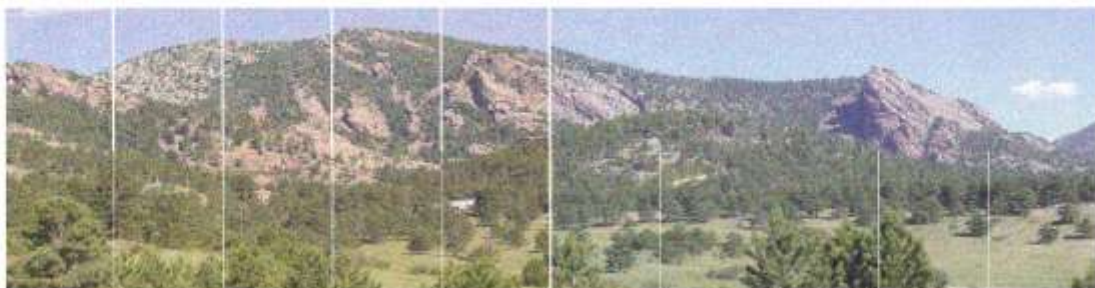
Wavy Point – 7 parts – approx 8" x 6 feet



Twin Peaks – 15 parts – approx. 22" x 64"



Winter Vista – 8 parts – approx. 11" x 64"



Western Ridge – 20 parts – approx 22" x 6 feet 6 inches